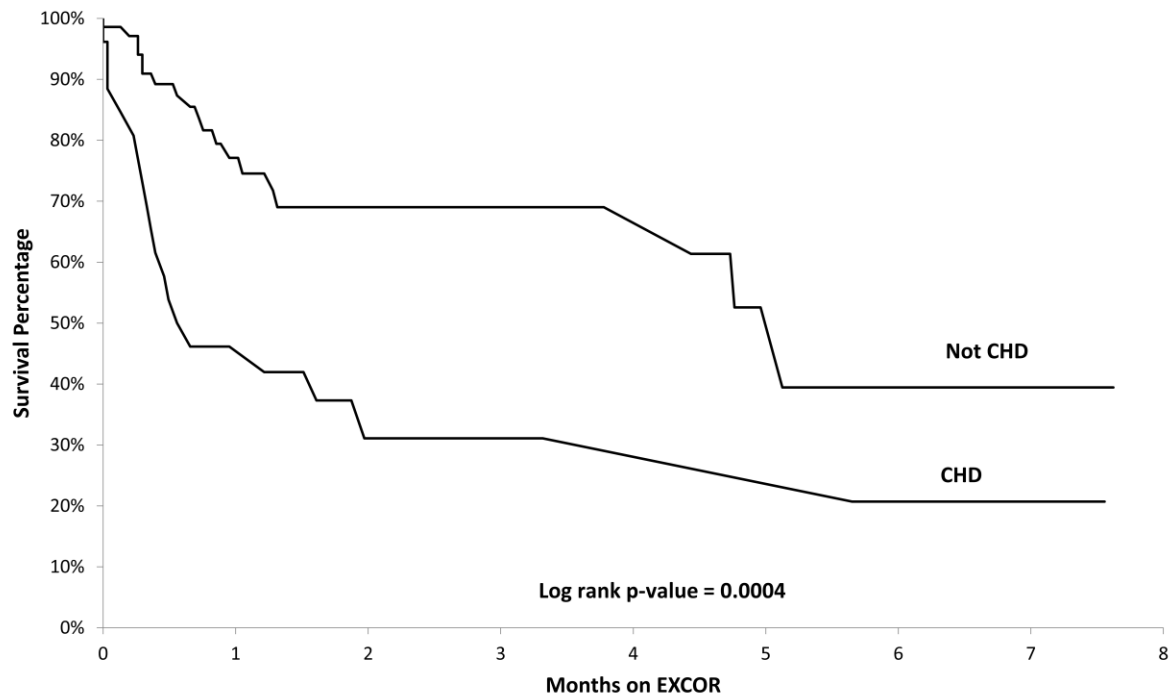


Table 1: Congenital Heart Disease Diagnosis and Previous Cardiac Surgeries		
Weight (kg)	Primary Diagnosis	Previous Congenital Cardiac Surgeries
2.8	Hypoplastic Left Heart Syndrome (HLHS)	Damus-Kaye-Stansel (DKS)/Shunt
2.9	Unbalanced Atrioventricular Septal Defect (AVSD)	Norwood
3	Pulmonary Atresia/Intact ventricular Septum	Blalock-Taussig Shunt
3	Pulmonary Atresia/Ventricular Septal Defect (VSD)/Left Pulmonary Artery stenosis	VSD Repair/Atrial Septal Defect (ASD) Repair/Right Ventricle to Pulmonary Artery (RV-PA) homograft /division of Patent Ductus Arteriosus/Pulmonary Arterioplasty
3.2	Left Heart Valvar-Structural Hypoplasia	None
3.3	HLHS/anomalous coronary	Norwood
3.5	Aorto-Left Ventricle (LV) Tunnel	Aorto-LV Tunnel Repair
3.5	Truncus Arteriosus/VSD/ coarctation of aorta/single coronary artery	Complete Truncus Arteriosus Repair (VSD closure + RV-PA conduit)/Coarctation Repair
3.6	Other	None
3.9	Single Ventricle: AVSD	Damus-Kaye-Stansel (DKS)/ Pulmonary Artery banding
4	Coarctation with hypoplastic aortic arch /VSD/ASD	Outflow tract reconstruction/VSD repair/ASD repair
4	Transposition of Great Arteries (TGA)	TGA repair
4.8	Mitral Valve Stenosis	Mitral valve replacement/repair
5.2	Anomalous Left Coronary Artery	Anomalous Left Coronary Repair
5.6	Dysplastic tricuspid valve/severe Tricuspid Regurgitation/Pulmonary Stenosis	Right modified Blalock-Taussig shunt (BTS) and BTS takedown
6.2	TGA/VSD	TGA Repair

6.9	HLHS	Norwood and Bi-directional Glenn
7	Single Ventricle	Bi-directional Glenn
7	Single Ventricle	DKS
7	Partial AVSD	ASD Repair
7.1	Ebstein's Anomaly	Aortic Pulmonary Shunt and Pacemaker
7.5	Complete AVSD	Complete AVSD Repair
7.9	Shone's Complex	Mitral valve (MV) repair/replacement
8	Double Outlet Right Ventricle/mitral atresia	Pulmonary Artery band
8.2	Coarctation/VSD	Coarctation repair/VSD Repair/MV replacement
8.5	HLHS	Norwood



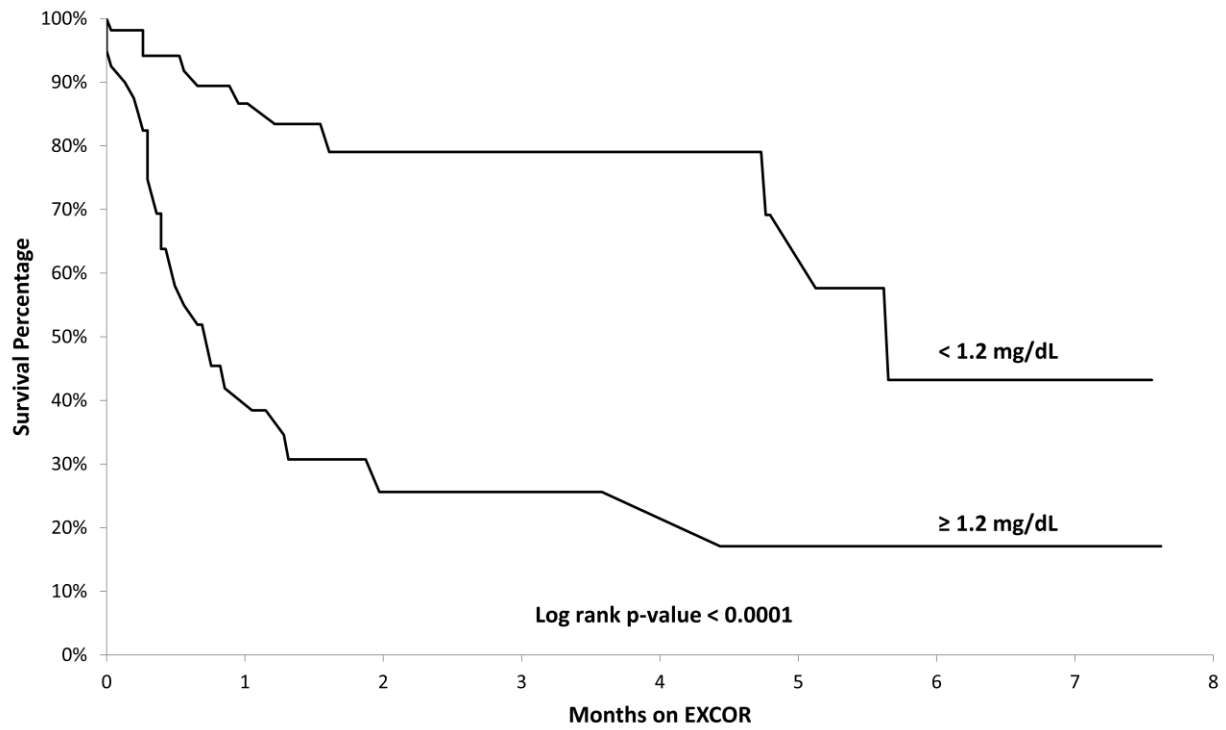


Table 2. Serious adverse events (not all collected events reported)				
Events occurring while on support	Weight group <10 kg n=97		Weight group ≥10 kg n=107	
	Total # of events	Subjects with event	Total # of events	Subjects with event
Major bleeding	71	42 (43.3%)	91	48 (44.9%)
Hepatic dysfunction	18	12 (12.4%)	8	7 (6.5%)
Hypertension	34	29 (29.9%)	30	29 (27.1%)
Major infection	87	44 (45.4%)	112	49 (45.8%)
Neurological event	33	29 (29.9%)	40	30 (28.0%)
TIA	7	7 (7.2%)	5	5 (4.7%)
Ischemic CVA	16	15 (15.5%)	30	26 (24.3%)
Hemorrhagic CVA	1	1 (1.0%)	4	4 (3.7%)
Acute renal dysfunction	16	14 (14.4%)	10	9 (8.4%)
Chronic renal dysfunction	0	0 (0%)	2	2 (1.9%)
Respiratory failure	34	28 (28.9%)	42	31 (29.0%)
Right heart failure	13	13 (13.4%)	15	13 (12.1%)

TIA: transient ischemic attack

CVA: cerebrovascular accident

F: Fisher's exact test